



6 Enhancements

This chapter is about making improvements to the system in the following areas:

hardware

memory

software

PC Card

IrDA port

Audio

TouchPad

If you plan on increasing your system memory, be sure to read the “Memory” section before you make any purchases.

The PC Card driver is not needed for most *Windows 9x* users. However *Windows NT 4.0* users will find it very useful.

The ZV Port drivers are required if you plan on using the PC Card socket for that type of card. It is not necessary for any other type of card.

If you use the TouchPad frequently, the enhanced driver allows you to make it even more user friendly. However, it doesn't have any effect if you're using an external pointing device.

MEMORY

The notebook comes with no onboard memory. You can upgrade to as much as 256MB. This involves opening the memory compartment and installing one or two DIMMs.

You can install modules in either one socket or in both sockets (in any order and any size combination).

Socket requirements:

- 16MB, 32MB, 64MB or 128MB module size
- 144 pins
- EDO or SDRAM type S.O. DIMMs
- 3.3-volt
- TSOP package
- Rated at 10ns or faster

Make sure you put the correct type in each socket.



Warning

Check with your dealer to make sure installing RAM yourself doesn't violate your warranty.



Warning

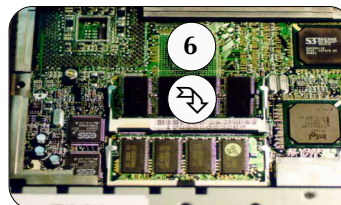
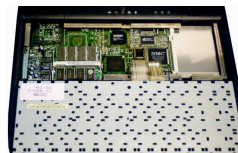
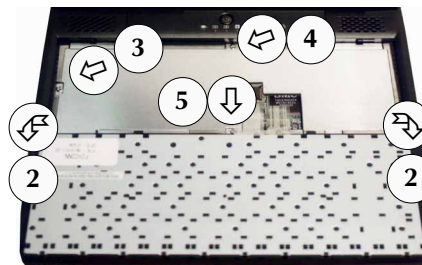
Make sure each module meets all of the criteria for the socket it will be used in.



Installing DIMMs

If you install additional memory by yourself,

1. Make sure the system is turned off, you are wearing an antistatic wrist strap (available from most computer supply dealers) and you are in a dust/smoke-free environment.
2. Place the computer on a clean, dry, level surface.
3. Using a small flat-head screwdriver, press in the keyboard anchor tabs on the top edge of the keyboard(1).
4. Flip the keyboard forward (2) and remove the metal cover plate's anchor screws (3)-(5). Then remove the plate - **Do not disturb the keyboard connection cables!**
5. Insert a DIMM in either slot at about a 20° angle (6). Grooves on the sides of the module allow you to insert it only one way. Make sure it is seated as far into the slot as it will go.
6. Gently push down on the module until its lock-catches snap into place. **DO NOT FORCE IT.** The module should fit in without much pressure. If there is a lot of resistance, check to make sure the DIMM is properly seated.
7. Install the second module in the same way.
8. Replace the metal cover plate, screws and the keyboard.
9. After changing the RAM configuration, run *Setup* so the new total can be registered in the CMOS (refer to *Chapter 4: Firmware*).



Warning

Do not touch the module's edge connectors. Even the cleanest hands can leave oils which may attract corrosive particles.

INSERTING THE DIMM

FIG. 6 – 1

Follow the instructions on the opposite side-bar. Modules can be inserted in any order.

6

CARDWIZARD

The *CardWizard* utility is only supplemental for *Windows NT 4.0* (though highly recommended). It gives you information about the status of the cards and sockets, troubleshoots card configuration problems, and resolves resource conflicts.

Windows NT 4.0, on its own, won't allow "hot" insertion or removal of PC Cards. *CardWizard* overcomes this deficiency. However, before removing a card, you should click on **Stop** from the *CardWizard*'s *Action* menu. This makes sure no applications are using the card, which might cause a problem if the card is removed.

In *Windows NT 4.0*, start *CardWizard* from the taskbar (**Start > Programs > CardWizard for Windows NT**).

For more information on *CardWizard* features, you can click on *CardWizard*'s **Help** icon or go to the "Help" menu if you have already activated *CardWizard*.



Installing CardWizard

WINDOWS NT 4.0

The *CardWizard* utility is the same as that for the *Windows 9x*. You should install it *after* you have activated the PC Card utility in *Windows NT*. To install,

1. Open **Control Panel > Add/Remove Programs** and choose **Install...**
2. Insert the *Drivers/Utilities* CD-ROM and click **Next**.
3. Browse to
D:\drivers\nt40\pc_card\setup.exe*,
Click on **Open** then the **Finish** button.

* This assumes your CD-ROM is drive "D:".

4. Follow the program's dialog boxes. The utility creates a set of sub-directories for itself in the Program Files directory on your C: drive unless you choose otherwise.

Near the end of the installation, the utility asks if you want to view the "readme" file. We suggest you take a moment to scan it.

5. When the installation is complete, allow the system to reboot to complete the setup.

Note: To activate the PC Card, open **Control Panel > Devices**, and choose "Pcmcia" from the listings. Click on **Startup...** then choose "System". Click on **OK**, then on **Close**. Allow the system to reboot for the changes to take effect.



Installing CardWizard (cont.)

Note: Card Wizard can detect a card's installation and "correct" the system resources allocation. Press the **Wizard** button for more information. When you first install an unrecognized card, you'll hear a warning beep. Run *CardWizard* and allow it to configure the system resources. The next time you install that card, *CardWizard* will recognize it.



Formatting in Windows NT 4.0

Windows NT 4.0 has the necessary formatting utilities built in.

USING CARD WIZARD

Card Wizard can detect a card's installation and "correct" the system resources allocation. Press the **Wizard** button for more information. When you first install an unrecognized card, you'll hear a warning beep. Run *CardWizard* and allow it to configure the system resources. The next time you install that card, *CardWizard* will recognize it and adjust the system automatically.

IrDA DRIVERS

Your notebook includes an infrared serial port. The accompanying *Drivers/Utilities* CD-ROM also includes a FIR driver for the IrDA port. This driver only works with *Windows 95*, so its included in that operating system's driver folder.

To use it in *Windows 95*, you must also download the **W95ir.exe** driver from the Microsoft web site or talk to your dealer. Then, follow the instructions in the side-bar to perform the installation. *Windows 98* does the resource allocation automatically but *Windows NT 4.0* provides no support of this device.



Installing FIR for IrDA Drivers

WINDOWS 95

1. Choose Serial Port B's mode settings as "**FIR**" in the BIOS *setup* (see Chapter 4: Firmware).
2. When the system starts, the *Update Device Driver Wizard* will appear. click on **Next > Other Locations > Browse**, and navigate to: d:\drivers\win95\fir

Click on **OK** (twice), then **Finish** to update driver for "SMC IrCC (Fast Infrared) Hardware and Driver". If asked for "Insert Disk", redirect to d:\drivers\win95\fir\smcser.inf

3. Click **Run...** from the **Start** menu. Locate and double-click the **W95ir.exe** (download this driver from the Microsoft web site or talk to your dealer) file icon to launch self-extracting.
4. Locate and double-click the **setup.exe** file. When prompted, choose "SMC IrCC(Fast Infrared) Hardware and Driver(COM2)", and "use default ports".
5. Click on **Programs** from the **Start** menu , then use *Windows Explorer* to navigate to: d:\drivers\win95\fir\smcirlap.inf

Click **right** mouse button and choose **Install**. When asked for **smcirlap.vxd**, redirect to the same location to continue the setup. When finished, the IrDA driver is ready for your use.



AudioRack32 Setup

WINDOWS 95

The AudioRack32 utility supplements the ESS AudioDrive. To install,

1. Insert the *Drivers/Utilities* CD-ROM.
2. Use the **Add/Remove Programs** utility in the **Control Panel**.
3. Click on **Install...** then **Next**.
Click on **Browse...** and navigate to
D:\drivers\win95\audio\audrack\setup.exe *
Click **Open**, then **Finish** to start the installation.

* This assumes your CD-ROM is drive "D:".
4. Follow the program's dialog boxes. The utility will create an "AudioRack" sub-folder in the "Program Files" folder for itself on your C: drive unless you choose otherwise. Once the installation is complete, the utility is ready for your use.

AUDIO APPLETS

The system also comes with audio applets, *AudioRack32*, for *Windows 95*. The enhanced applets allows you to use audio functions more conveniently than the OS-built-in applets. See the side-bar for more detail installation instructions.

TOUCHPAD

If you want to take full advantage of the TouchPad's capabilities, you need to install the specialized drivers which come with your system. These are on the accompanying *Drivers/Utilities* CD-ROM.

GESTURES

The software adds the following enhanced features to *Mouse Properties* to allow you to define your TouchPad "gestures" to your preference:

1. "Button Actions" page allows you to customize the taps action in the corner tap zone regions.
2. "Scrolling" page allows you to customize the Touchpad's capabilities to scroll documents without having to move the pointer away from your work.
3. "Touch" page allows you to customize your TouchPad's tap sensitivity.
4. "Edge Motion" page provides the capabilities to allow you to move the pointer beyond the edge of Touchpad and until you left your finger.
5. "More Features" page provides more better controls to your TouchPad.

For more details, refer to the "Help" button in *Mouse Properties*.



TouchPad Driver Installation

WINDOWS 9x & NT 4.0

1. Insert the Drivers/Utilities CD-ROM.
2. Use the **Add/Remove Programs** utility in the **Control Panel**.
3. Click on **Install...** then **Next**.
Click on **Browse...** and navigate to
D:\drivers\win95\touchpad\setup.exe*
or : \drivers\win98\touchpad\setup.exe*
or D:\drivers\nt40\touchpad\ntsetup.exe*
Click **Open**, then **Finish** to start the installation.

* This assumes your CD-ROM is drive "D:".

4. Follow the on-screen instructions. (For *Windows NT4.0*, it will ask to run the emergency repair disk before installing, do so if you have already created one.) The utilities will create a "Synaptics" sub-folder in the "Program Files" folder for itself on your C: drive unless you choose otherwise.

If asked for "Insert Disk", redirect to the same location as indicated in step 3. When prompted, allow the system to restart.

5. After reboot, an information about your TouchPad dialog box appears. You should also see the TouchPad icon in your taskbar next to the clock.

Note: For normal operations, click on the Mouse icon in the Control Panel or double-click the TouchPad icon in the task bar if you want to change the default settings.



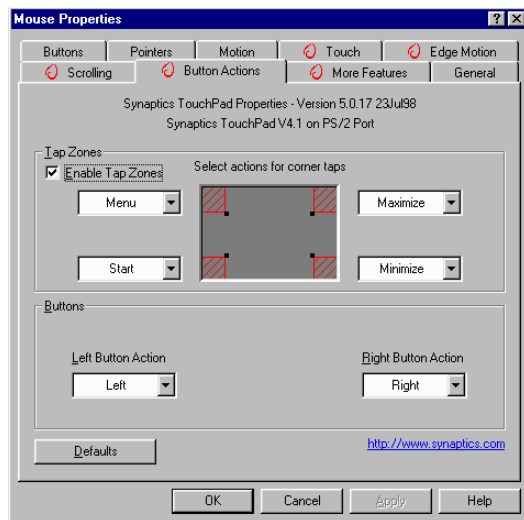
CUSTOMIZING GESTURES

WINDOW 9x & WINDOWS NT 4.0

To customize TouchPad gestures in *Window 9x*, use the **Buttons** tab in *Mouse Properties* of *Control Panel*:

1. From the **Start** menu, select **Settings > Control Panel**.
2. Double-click on the **Mouse** icon.

When the Mouse Properties page appears, use the on-line help (click the help button) to get information about each feature. To configure other features, click on other tabs.



MOUSE PROPERTIES
FIG. 6 - 2

Enhancements

NOTES:

6